



# Prestan Professional AED Trainer

## Inserting the Training Pads

When inserting or changing the training pad on the Prestan Professional AED Trainer, here are a few tips to ensure a proper connection:

1. Match the illustrated side of the training pad with the lead side grooved for the larger part of the black attachment button (figure 1). **If the pads are inserted backwards, the AED Training Scenario will not advance.**
2. Gently insert the pad post into the slotted end of the lead, until the hole in the pad post lines up with the hole in the lead. Snap the black attachment button into place to secure the two pieces together (figure 2).
3. The small side of the black attachment button is on the same side of the training pad with the adhesive and sensor disk. To remove the training pad, simply push a pointed object (like a pen tip) into the small side of the black attachment button. The button will pop out and the pad may be separated from the lead.

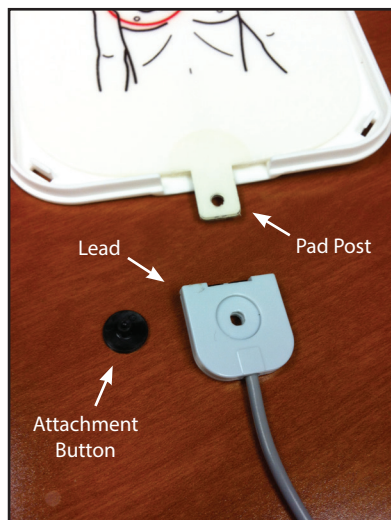


Figure 1



Figure 2

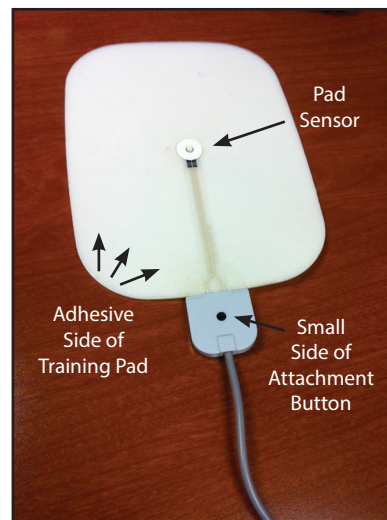


Figure 3

**MCR** | **MEDICAL**®