

# WL220 AED Trainer

Instruction Manual

**Manufactured for**  
WNL Products  
275 Hopping Brook Road  
Holliston, MA 01746  
800-884-9629  
www.wnlproducts.com

Date: 2022-03-25  
Doc. No.: WNL-120C+-US  
Version: C1

- Thank you for purchasing WL220 Practi-Trainer.
- Please read the instruction manual carefully and thoroughly before operating the device.
- Keep the instruction manual available for future reference.

## Content

1. Product Introduction .....	01
2. Overview .....	01
3. Setup .....	06
4. Operating Instruction .....	07
5. Storage Information .....	09
6. Pre-programmed Scenarios .....	10
7. Replacement of the Language/Scenarios Card .....	11
8. Specification .....	12
9. Product Contents .....	12
10. After-sales Service .....	12

## 1. Product Introduction

The WL220 Practi-TRAINER® with Replaceable Language/Scenario Card is designed to effectively train anyone in the use of an Automated External Defibrillator (AED). This universal AED training unit provides a variety of pre-programmed scenarios to help trainees become familiar with the functions of an AED and in an emergency situation.

The WL220 provides simulated shock delivery. To ensure safety during training, it has no high voltage capabilities and cannot deliver a shock.

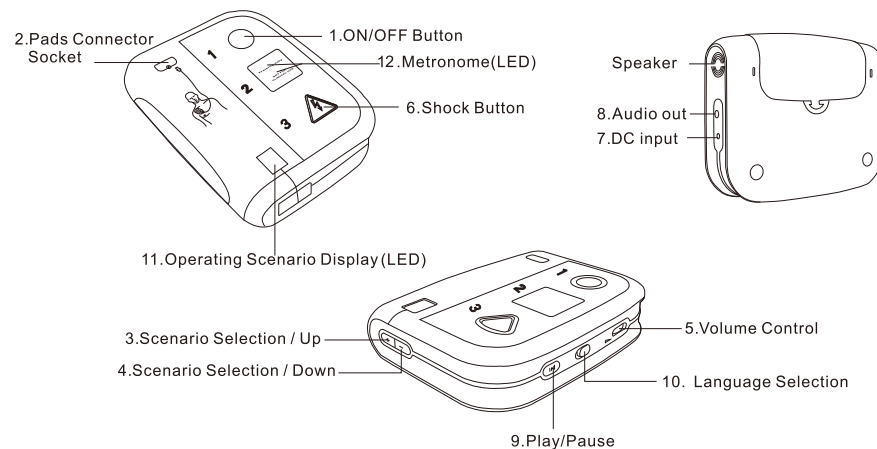
NOTE: Before using a real clinical AED, the responder should complete an appropriate training program, and have demonstrated proficiency in Basic Life Support skills.

## 2. Overview

The WL220 includes Main Body, Remote Control, Plug-in Module, 1 set each of Adult and Child training pads, Wire Connectors for adult and Child, and Storage Bag.

### 2.1 Main Body

The WL220 includes Main Body, Remote Control, Plug-in Module, 1 set each of Adult and Child training pads, Wire Connectors for adult and Child, and Storage Bag.



1. On/Off button

Turn unit on and initiate voice prompts. Press once to turn it on. Press again to turn it off.

2. Pads Connector Socket

Insert the training pads connector into this socket. The LED flashes to indicate the socket location as voice prompts to plug it in. Once properly connected, the LED is covered.

3/4. Scenario Selection

There are pre-programmed scenarios. Press these buttons to scroll up and down to change the scenarios.

5. Volume Control

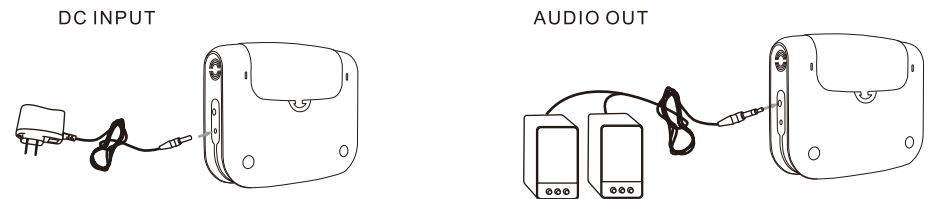
Control the volume of the voice prompt during use.

6. Shock Button

Press to “deliver” simulated shock. The button flashes when the unit is ready to deliver the simulated shock and the voice prompt indicates to press this button.

7. DC Input

This interface connects the AC adapter (sold separately). When not using batteries to power the unit, plug in the AC adapter for power. Adapter is for use with DC4.5V/300mA. DO NOT use batteries when adapter is plugged in.



8. Audio Out

External speakers can be connected to the WL220 with a standard audio jack.

9. Play / Pause

This button can temporarily pause all operations of the unit. Press once to pause, and press again to continue.

The play/pause button can be used to turn the metronome sound on or off. During CPR, press the play/pause button for 3 seconds to turn the metronome on/off.

10. Language Selection

The WL220 Practi-TRAINER® is designed with bilingual scenarios. The user can change the language of the scenario prompts using this toggle switch. Language selection is dependent upon the module that was purchased and installed into the unit. “ - ” or “ — ” will be displayed in the display window when switching the language.

## 11. Display Window (LED)

Display	Description
0	Scenario #0
1	Scenario #1
2	Scenario #2
3	Scenario #3
4	Scenario #4
5	Scenario #5
6	Scenario #6
7	Scenario #7
8	Scenario #8
9	Scenario #9
+	poor pads connection
H	good pads connection
C	shockable rhythm
n	non-shockable rhythm

≡	motion detection
L	low battery
E	system error
I	Semi-auto mode
II	Full-auto mode
O	Pure beep
o	30:2 (30 compression plus 2 breath)
"	Pause
F	100cpm
P	110cpm
3	120cpm
-	Language 1
=	Language 2

## 12. Metronome (LED)

Flashing LED and audible “beep” count out the proper CPR compression rate in 3 modes:

Mode 1: 100cpm in 2 minutes

Mode 2: 110cpm in 2 minutes

Mode 3: 120cpm in 2 minutes

The audible metronome beep can be turned on/off. Please refer to step 9 on page 2.

## Automatic Shut Off

1. When using any scenario, if no operation is indicated after 5 circles. The unit will turn off automatically.
2. If the remote control is being used, the AED Trainer will turn off after 5 cycles if no functions are selected.
3. If low power is detected during use with batteries, the unit will turn off in 10 seconds. Plug in adapter if new batteries are not available.
4. If the unit is paused, with no other activity, it will turn off in 8 minutes.

## 8. Specification

Model No.: WL220 series

Name: Practi-TRAINER® with replaceable Language/Scenario module

Power Supply: DC 4.5V/3\*AA batteries

Product Size: 190x150x46mm

Static Current: <10μA

Maximum Current: <300mA

Remote Control

Power Supply: DC 3V/2\*AAA batteries

Static Current: <5μA

Maximum Current: <10mA

## 9. Product Contents

NO.	Contents	Quantity	Unit	Remark
1	Main Body	1	Pc	
2	Plug-in module	1	Pc	
3	Remote Control	1	Pc	
4	Wire Connectors	2	Pcs	1 yellow connector, 1 pink connector
5	Adult Pads	1	Pair	These pads can be used repeatedly
6	Child pads	1	Pair	These pads can be used repeatedly
7	Instruction Manual	1	Pc	
8	Storage Bag	1	Pc	Nylon bag

## 10. After-sales Service

10.1. This product is provided with a THREE-year warranty starting from the date of purchase.

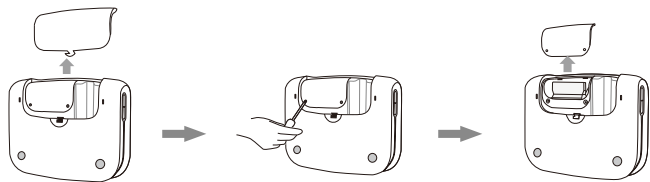
10.2. Malfunctions caused by the following actions are not covered under warranty:

- Disassembly or modification of the product without authorization.
- Accidentally damaging the product during use or transportation.
- Lack of reasonable care.
- Operation not in accordance with the instructions.
- Repairs conducted by unauthorized repair store.

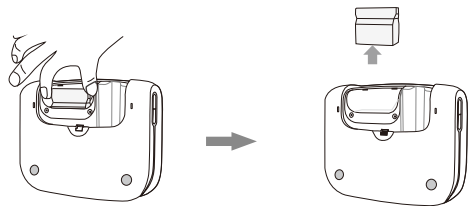
7. Replacement of the Language/Scenarios Card

Note: Please take out the batteries before replacing the card.

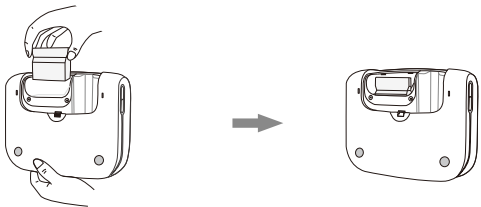
1.Make sure the unit is turned off. Remove the battery cover on the back of the unit. Unscrew (small Phillips head needed) the two screws on the compartment cover to access the plug-in module.



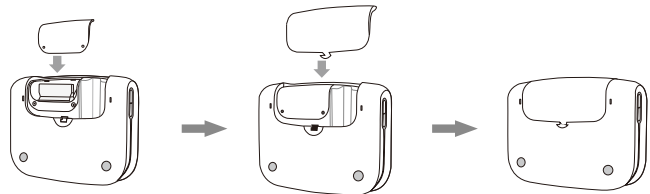
2. Grab the plug-in module on the sides and carefully pull straight up.



3. Take your new module, check for proper orientation. (printed/stamped side up) and push it straight down into the connector.




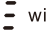

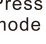
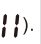

4. Replace the compartment cover and the main battery cover. Turn unit on to read the new module.



2.2 Remote Control

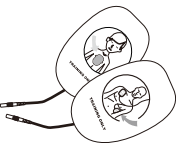


Icon	Name	Description
	Scenario 0 to 9	Select scenarios by numbers.
	PLAY/PAUSE	To play or pause the current scenario. If the scenario is paused,  will display.
	CPR Skip	In the 2 minutes of CPR, press the button to skip CPR
	Simulate shockable rhythm	The display shows
	Simulate non-shockable rhythm	The display shows
	Simulate poor pads connection	During training, if this button is pressed,  will display.
	Simulate good pads connection	During training, if this button is pressed,  will display.
	Simulate low battery	During training, if this button is pressed,  will display. A voice prompts “low battery”, and the current scenario will continue.
	Simulate system error	During training, if this button is pressed, it gives a “tick” sound, and  is displayed. The voice prompts are stopped. The “tick” sound is given again after 10 seconds and will repeat till the trainer is turned off in 8 minutes.
	CPR SWITCH	During CPR, press this button to switch between the below 2 metronome modes: only beep (display  ), or 30 beeps plus 2 breathe (display  ), and the CPR will restart.
	CPR FREQUENCY	During CPR, press this button to switch among the below 3 metronome modes: 100cpm (display  ), 110cpm (display  ), or 120cpm (display  ), and the CPR will restart.

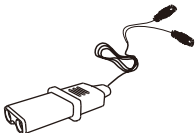
	Simulate motion detection	During training, if this button is pressed,  will display.
	Semi-auto/Full-auto Switch	Press this button to switch between semi-auto mode (display  ) and full-auto mode (display  ).
	Pads pre-connected	Simulates that the pads are pre-connected.

2.3 Other Components

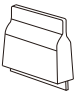
Training Pads




Wire Connector




Plug-in Card



Instruction Manual



Storage Bag



6. Pre-programmed Scenarios

10 preprogrammed scenarios in WL 220 Practi-TRAINER®.

Scenarios	Description	Operation
0	Ventricular Fibrillation- With single-shock conversion	Shockable rhythm 1 shock Non-shockable rhythm CPR (then repeats)
1	Ventricular Fibrillation- multiple shocks required	Shockable rhythm 4 shocks Non-shockable rhythm CPR (then repeats)
2	Troubleshooting Skills- Defibrillation pads	Poor pad connection Shockable rhythm 1 shock Non-shockable rhythm CPR (then repeats)
3	Ventricular Fibrillation- two shocks required	Shockable rhythm 2 shocks Non-shockable rhythm CPR (then repeats)
4	Non-Shockable Rhythm	Non-shockable rhythm throughout
5	Ventricular Fibrillation- wo shocks required	Shockable rhythm 2 shocks Non-shockable rhythm CPR (then repeats)
6	Ventricular Fibrillation- three shocks required	Shockable rhythm 3 shocks Non-shockable rhythm CPR (then repeats)
7	Troubleshooting Skills- Defibrillation pads with two shocks required	Poor pad connection Shockable rhythm 2 shocks Non-shockable rhythm CPR (then repeats)
8	Ventricular Fibrillation	Ventricular fibrillation throughout
9	Troubleshooting Skills- Motion, low battery, with one shock required	Motion artifacts Shockable rhythm 1 shock Non-shockable rhythm Battery low

## 5. Storage Information

### Pads Maintenance

- Keep the gel side of pads clean, dust free and covered with original packing when not in use.
- If pads lose some adhesion properties, they can be rinsed gently with water and left to dry-adhesive side up.
- Never wipe the gel adhesive with paper towels or cloth.
- Do not scrape the pads.
- With proper care, the pads should last for several training sessions.
- Do not wash pads frequently and never use detergent or hot water.
- Do not store pads in direct sunlight or in an area with high temperature or humidity.

### Main Body Maintenance

- After turning the unit off, make sure to pull out the connector and store it properly.
- If the unit is dirty, use a soft cloth with water and neutral detergent, wring the cleaning cloth well-do not immerse in water or any liquid.
- If necessary, clean with a cloth dampened with alcohol (75% concentration max.)
- Do not use abrasive cleaners.

### Storage Precautions

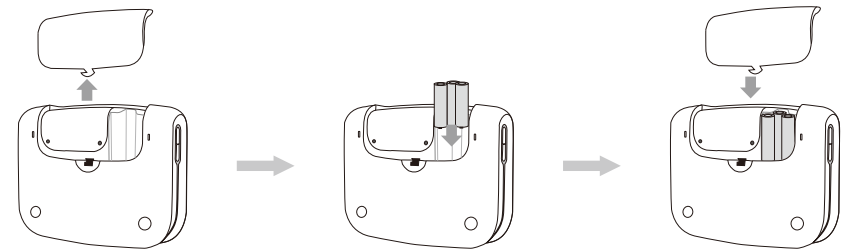
- Do not store near spirits or gasoline.
- Do not store in direct sunlight or where the unit will be exposed to high temperatures, moisture, excessive dust or corrosive materials.
- Store all parts in the bag provided.

※ Failure to comply with the above instructions may void the warranty.

## 3. Setup

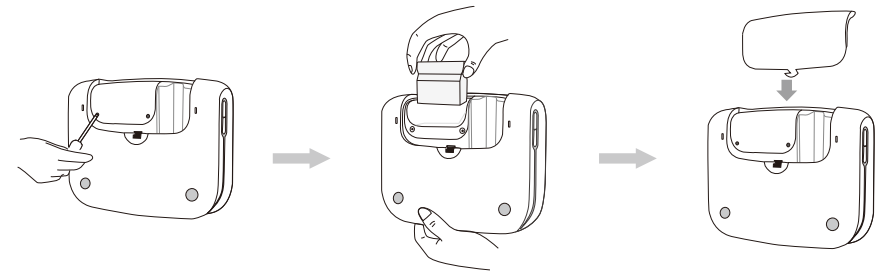
### 3.1 Battery Installation

- 1) Open the battery compartment in the back of the unit by pushing in the direction of the arrow.
- 2) Install 3 AA batteries noting the proper polarity. Please assure you are using fresh batteries for the best performance. (note: a clinical AED unit will not require this type of battery installation.)
- 3) Reposition the battery compartment cover.
- 4) The unit will indicate low battery with a voice prompt. When this is heard, remove old batteries and replace them or plug in the AC adapter.



### 3.2 Set Language

This unit generally ships with a language/scenario card already installed. If not, or if purchasing a new language or product update, this diagram shows how to install the plug-in module. You will need a small Phillips head screwdriver to open the module cover.



This plug-in design makes it easy to add different languages and to update your unit when new ECC guidelines are issued.

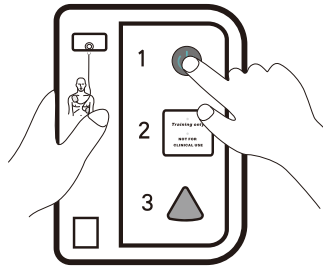


## 4. Operating Instruction

### 4.1 Turn on the trainer and select a training scenario

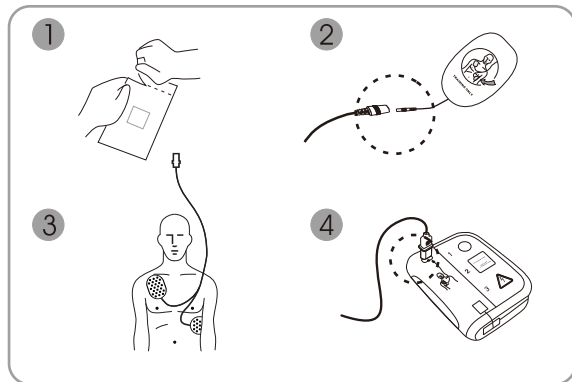
Turn on the unit, then press the scenario selection button to select a pre-programmed training scenario, the operating scenario number is displayed in the LED window.

Note: The last setting will be stored and maintained even if the unit has been turned off.



### 4.2 Connect pads

- 1) Take out the training pads.
- 2) Connect the wire with training pads.
- 3) Place pads on the chest in the position shown on the pad diagrams. (The Yellow connector is for the Adult pads, and the Pink connector is for Pediatric pads.)
- 4) Plug the connector into the socket on the training unit when prompted to do so.

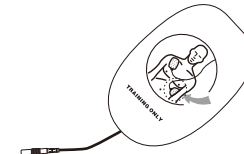
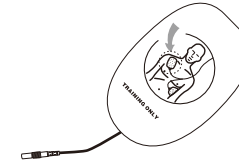


Note:

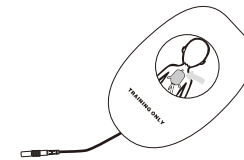
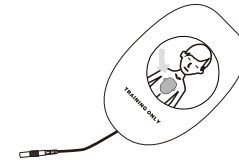
- Do not stretch the connection cord or bend it excessively.
- Always hold the connector itself when pulling it out of the socket.
- Use care when removing pads from manikins-do not pull on the cord and grasp the pads itself firmly.

## Training Pads

Adult



Child



Note: The training pads are for training use only and will not function with an actual clinical AED.

### 4.3 Follow the voice prompts

Follow the voice prompts according to the selected scenario.

